



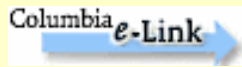
# CUMC LIBRARY & COMPUTING NEWS



Augustus C. Long Health Sciences Library  
Columbia University Medical Center

VOLUME 8, NUMBER 8  
AUGUST 2009

AMAZING THINGS ARE HAPPENING HERE!



## IS YOUR FRIEND!

There is arguably no greater electronic ally for a Columbia academic researcher than e-Link. This icon—which appears on the top of each PubMed or Medline citation—can be clicked to generate an instantaneous search of full-text subscriptions at Columbia. The e-Link button works both on- and off-campus and can be an easy gateway to the many thousands of journals available to Columbia affiliates. When you click e-Link, a new browser window will open with information on the item’s full-text availability. For more information, visit:  
<http://www.columbia.edu/cu/web/help/howto/elink/faq.html>

## QUICK TIP: SINGLE CITATION MATCHER

PubMed’s feature called “the Single Citation Matcher” is the fastest way to verify an article citation or to find a complete citation when you don’t have all the information. (A similar feature, called “Find Citation,” is also available in Medline). From an article’s PubMed or Medline record, full text could be a few clicks away if you use the e-Link icon (see article immediately above). To try it, click:  
<http://www.ncbi.nlm.nih.gov/entrez/query/static/citmatch.html>

## WELCOME TO COLUMBIA!

### Welcome to Columbia!

The Health Sciences Library staff look forward to helping you with your information and technology needs.

We invite you to visit the library for a tour of our facilities, to learn more about our resources and services, and to meet our staff .

### Learn more at:

<http://library.cpmc.columbia.edu/hsl/welcome.html>



## WHAT’S IN THOSE BOTTLES?



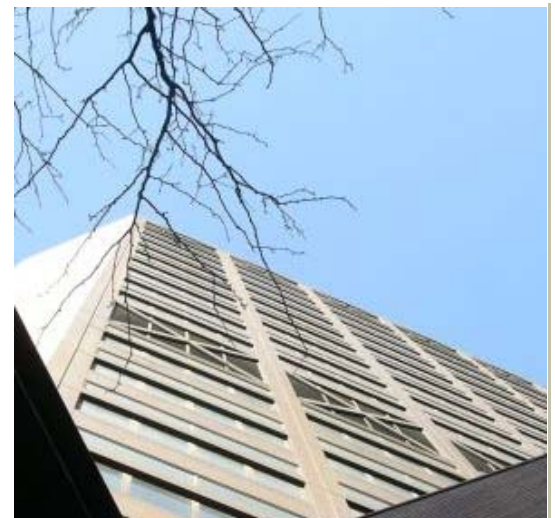
Let your library fill your information needs! (No Rx necessary.) Take advantage of the wealth of resources and services offered by the library. You can find the best medical evidence, get expert research help, access thousands of electronic journals and hundreds of e-books, use document delivery to request materials not found on site or online, learn more about doing research ...

Go to: <http://library.cpmc.columbia.edu/hsl/>

## WHERE IS THE LIBRARY?

Congratulations! If you are reading this you’ve found the library either online or on the CUMC campus.

We are located in the new Teaching and Learning Center in the Hammer Health Sciences building at the intersection of 168th Street and Fort Washington Avenue. Visit us on the Lobby Level on your way to a class in one of the newly renovated classrooms on the two Lower Levels, or stop by for one of our weekly PubMed or Ovid Medline sessions. We look forward to meeting you!





## PHAROS PRINTERS TO REPLACE NINJA PRINT SYSTEM

Due to overwhelmingly positive responses to the Pharos printing trial this past March and April, we will be switching to the Pharos printing system on Monday, August 24th.

Please note that once the Ninja printing system has been replaced, any pages purchased online via the [myUNI \(http://myUNI.columbia.edu/\)](http://myUNI.columbia.edu/) website will be usable only on the Morningside Heights campus through the Ninja system. If you will not be printing at Morningside, please do not purchase pages this way!

Improvements to campus printing via Pharos will include:

- A printing quota of 1000 pages for students.
- Print jobs only need to be sent to one printer/queue, then any

- Pharos printer at any location on campus can be used to print.
- 3 of the laserjet printers will be upgraded to newer models, for a total of 18 black and white and 1 color printer. Printer locations will not change.
- You can easily configure your own computer to print to Pharos.

We will update the CUMC IT website as Pharos is rolled out with details and to keep everyone informed on its progress. Thanks to everyone who tested Pharos last Spring and submitted our printing survey with their feedback.

## IMPROVE YOUR COMPUTER'S HEALTH

Just as regular check-ups are important to keep yourself healthy, computers that are scheduled to receive regular software updates are the ones that have a much higher rate of performance and uptime.

Additionally, the CUMC wired network in student housing uses the Bradford tool to keep the network safer. Bradford periodically performs a quick scan on computers connecting to the network to verify that basic security policies are being met.

These policies are that the computer has:

- Current operating system updates
- Working antivirus and antispyware programs with their current virus and spyware definition updates

If your computer isn't updated, it runs the risk of losing connectivity until it has been patched. Viruses, trojans and other malware have evolved to spread in very short periods of time, and an

infected computer will severely hinder all network traffic in addition to trying to infect all neighboring computers. More information on security policies and the Bradford tool can be found at: [http://cumc.columbia.edu/it/getting\\_started/bradford\\_policy.html](http://cumc.columbia.edu/it/getting_started/bradford_policy.html)

To protect your computer and data, make sure that your operating system, antivirus, antispyware and other software programs are set to look for updates on a regular basis and will download and install them automatically. If you would like to verify the updates before installing them, most programs have a setting to notify you when updates are available and give details about any software changes. For help with using automatic updates please see our page at [http://www.cumc.columbia.edu/it/getting\\_started/os.html](http://www.cumc.columbia.edu/it/getting_started/os.html)



### AUGUSTUS C. LONG HEALTH SCIENCES LIBRARY HAMMER HEALTH SCIENCES CENTER

701 W. 168th Street, New York, NY 10032.

TEL: (212) 305-3605

FAX: (212) 234-0595

EMAIL: [hs-library@columbia.edu](mailto:hs-library@columbia.edu)

WEB: <http://library.cpmc.columbia.edu/hs/>

### SUMMER HOURS

Mon. - Thurs. - 8:00 am – 8:00 pm

Fri. - 8:00 am – 6:00 pm

Sat. - 10:00 am – 6:00 pm, Sun. - 12:00 Noon – 8:00 pm

Walk-in Research Help: Mon. - Fri., 12 Noon – 4 pm

24 Hour Computer Room - 24 hours/7 days

After Hours Study Room - 24 hours/7 days

PH-17 Computer 8:00 am - 2:00 am