

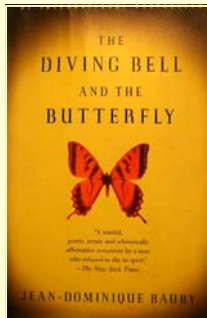


ONE READER TO ANOTHER



John T. Oliver, MLS
Reference Librarian

Recommends:



By Jean-Dominique Bauby Knopf : Random House, 1997
Available at
The Health Sciences Library
Call #: [RC388.5 .B26 1997](#)

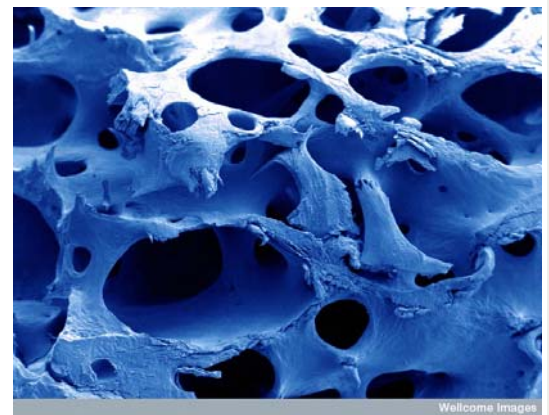
"This quadriplegic's autobiography recorded letter-by-letter by way of a code of eyeblinks and an interpreter, shows the immense power of the human imagination and spirit. It is an extremely fast read providing an amazing example of how a person can choose his or her response to almost any circumstance. Deemed a victim and a lost case, the author controls his fate even as he cannot control any part of his body other than one of his eyes. He transports himself into a world of memories and fantasies and tells us his story, one blink at a time."

OPEN SCIENCE GOOD FOR RESEARCH, GOOD FOR RESEARCHERS?

A panel presented by Columbia University's Scholarly Communication Program will discuss online science communities and the practice of open science, with guest speakers from the Public Library of Science, Drexel University, and OpenWetWare. The event, "Open Science: Good for Research, Good for Researchers?" will take place on Thursday, February 19, 2009, at 3 p.m. in Davis Auditorium in the Shapiro Center on Columbia's Morningside Campus, and is free and open to the public.

Open science refers to information-sharing among researchers, and encompasses a number of initiatives to remove access barriers to data and published papers and to use digital technology to more efficiently disseminate research results. Advocates for this approach argue that openly sharing information among researchers is fundamental to good science, speeds the progress of research, and increases recognition of researchers. The panel will discuss frequently raised questions such as "Can open science practices work for researchers who need to establish priority of publication to advance their careers?" and "Is open science compatible with peer review?"

For further information regarding this event, please see the Scholarly Communication Program Web site <http://scholcomm.columbia.edu/open-science-good-research-good-researchers> or contact Kathryn Pope by sending email to kp2002@columbia.edu or by calling 212-851-2856.



Normal bone
Credit [Debbie Marshall](#), Wellcome Images
Scanning electron micrograph of normal bone, computer-coloured blue. 2003

NETWORK FOR CONTINUING MEDICAL EDUCATION

NCME TV is an online continuing medical education (CME) system that allows Columbia faculty, staff and students to access streaming videos in order to earn CME credits. State-mandated and Joint Commission topics are among the offerings. The Network for Continuing Medical Education (NCME) has been providing medical education since 1965 to hospitals across the country. NCME (Online) Network for Continuing Medical Education, is available at: <http://library.cpmc.columbia.edu/hsl/ncmereg.html>
Click 'NCME Registration' and follow the steps to 'Sign Up for NCME TV' for an online viewing of this video series. If you have already registered, click 'Use NCME TV.'

Alternatively, access to this resource is possible on the Health Sciences Library's Homepage under E-Resources at:

<http://library.cpmc.columbia.edu/hsl/>

The library also subscribes to other versions of the NCME videos; (VHS, CD, DVD). You may search for NCME by title in CLIO, Columbia University's Online Catalog at <http://clio.cul.columbia.edu>





Red Blood Cells clearly showing their bioconcave disc shape through a scanning electron micrograph.



Credit Anne Cavanagh - Wellcome Images . See the 2008 Wellcome images award winners at: <http://www.wellcome.ac.uk/en/wia/index.html>

NYC HEALTH DATA WORKSHOPS

Do you know what the 3rd leading cause of premature death in Inwood-Washington Heights is? What about the prevalence of diabetes in each of the five boroughs and New York City overall? Come and join research analysts from the NYC Department of Health & Mental Hygiene to learn how to find answers to these questions with the help of Health Department data, and how to use this data to inform your health research. The health data sources presented in this workshop will allow you to stay aware of important health issues in different NYC communities where you are doing research and running public health programs; apply for grants for health prevention programs focused on the needs in your population; establish baseline data for program evaluations, intervention proposals, and research projects; educate yourself and fellow students or colleagues about health topics most salient in New Yorkers' lives. For workshop information and registration go to: <http://library.cpmc.columbia.edu/hsl/classes/desc.cfm?classid=156> . You may find information about the NYC interactive health data at the Department's Web site: <https://a816-health3ssl.nyc.gov/> .

AUGUSTUS C. LONG HEALTH SCIENCES LIBRARY HAMMER HEALTH SCIENCES CENTER

701 W. 168th Street, New York, NY 10032.
TEL: (212) 305-3605
FAX: (212) 234-0595
EMAIL: hs-library@columbia.edu
WEB: <http://library.cpmc.columbia.edu/hsl/>

P&S CIVIL WAR VETERANS LIST

Archives & Special Collections at the Columbia University Health Sciences Library is pleased to announce the addition to its web site of the "College of Physicians & Surgeons Civil War Veterans List." It can be found at:

<http://library.cpmc.columbia.edu/hsl/archives/civilwar.html>

Compiled by Archivist Jennifer McGillan, the list gathers together in one place the names, ranks, military units, and dates of service of the 406 alumni who served in the Civil War (398 Union, 8 Confederate). It can be easily downloaded as an Excel document.

This compilation was an outgrowth of the research McGillan did for the [Columbia University War Memorial](#) an online compilation of all University alumni who died in the service of their country.

With the Sesquicentennial of the Civil War approaching, we hope that this may prove a valuable resource for the medical history of that conflict, and especially for highlighting the role Columbia University alumni played in it.



"Recruiting for the War-- Scene at the Recruiting Tents in the Park, New York"
Adapted from Frank Leslie's Illustrated Newspaper, March 19, 1864, p. 404.
Library of Congress Catalog #LC-USZ62-93555

HSL SPRING SEMESTER HOURS

Mon. - Thurs. - 8:00 am – 11:00 pm
Fri. - 8:00 am – 8:00 pm
Sat. - 10:00 am – 11:00 pm
Sun. - 12:00 Noon – 11:00 pm
Walk-in Research Help:
Mon. - Fri., 11:00 am - 5:00 pm
24 Hour Computer Room - 24 hours/7 days
After Hours Study Room - 24 hours/7 days
PH-17 Computer 8:00 am - 2:00 am